



CLARINET

FABRIC LIGATURE METAL LIGATURE

HARD RUBBER MOUTHPIECES

Bb/Sib	ACB 1	ACB 5
Bb/Sib German	ACB 1	ACB 5
Eb/Mib	ACB 5	ACB 11
Eb/Mib German	ACB 5	
ALTO + BASSET HORN	ACB 7	ACB 6
BASS	ACB 4	ACB 7
BASS German	ACB 7	ACB 6
CONTRABASS	ACB 4	

CRYSTAL MOUTHPIECES

Bb/Sib	ACB 3	ACB 5
--------	-------	-------

CODE INSIDE →



SAXOPHONE

FABRIC LIGATURE METAL LIGATURE

HARD RUBBER MOUTHPIECES

ALTO	ACB 3	ACB 5
TENOR	ACB 7	ACB 6
SOPRANO	ACB 5	ACB 11
BARITONE	ACB 4	ACB 7
SOPRANINO	ACB 16	

METAL MOUTHPIECES

ALTO	ACB 5	ACB 10
TENOR	ACB 1	ACB 10
	ACB 5	
SOPRANO	ACB 16	
BARITONE	ACB 7	

CRYSTAL MOUTHPIECES

ALTO	ACB 6	
TENOR	ACB 6	
SOPRANO	ACB 5	ACB 11



CAP - SPARE PART

WHEN DETAILS MAKE THE DIFFERENCE



CAP

ABS - PLASTIC

SPARE PART

www.bgfranckbichon.com



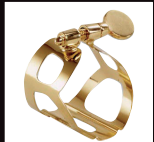
STANDARD
FOR ENSEMBLE
WORK &
CHAMBER MUSIC



THE SOUND
Le SON



SUPER REVELATION
THE SOLOIST'S
LIGATURE



TRADITION
THE SOLOIST'S
LIGATURE



REVELATION SILVER
CLEAR SOUND,
FREE BLOWING,
EASY STACCATO



METAL JAZZ
EVEN SOUND,
EASY STACCATO
ALL A+T METAL MP



THE ALTERNATIVE

Sax MOUTHPIECE

DESIGN BY SERGE BICHON
HANDMADE BY ZINNER

- FREE BLOWING
- BRILLIANT,
WITH A ROUND CHARACTERISTIC
- EASY INTONATION AND PROJECTION
ACROSS EVERY REGISTER

FOR BRIGHTER
TYPE SAXOPHONES
(YAMAHA, YANAGISAWA, ...) **SB1**

FOR MELLOWER/ROUNDER
TYPE SAXOPHONES
(SELMER, ...) **SB2**

PRE TESTED INDIVIDUALLY

www.bgfrankbichon.com



THE ALTERNATIVE

Clar MOUTHPIECE

HANDMADE BY ZINNER

**WARM, FOCUSED TONE
THAT PROJECTS WELL**

- EVEN RESPONSE THROUGHOUT
THE RANGE
- VERY FLEXIBLE
- DYNAMIC CONTROL

FOR LARGE ROOMS,
LARGE ENSEMBLES **B1**
REED # 3

FOR CHAMBER MUSIC,
SMALL + MEDIUM ENSEMBLES **B2**
REED # 3^{1/2}

PRE TESTED INDIVIDUALLY



THE SOUND
Le SON



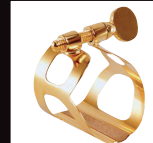
REVELATION
CLEAR SOUND,
EASY STACCATO



STANDARD
FOR ENSEMBLE
WORK &
CHAMBER MUSIC



REVELATION SILVER
CLEARER SOUND



TRADITION
THE ORCHESTRAL
LIGATURE
SILVER / GOLD PLATED



SUPER REVELATION
THE SOLOIST'S
LIGATURE